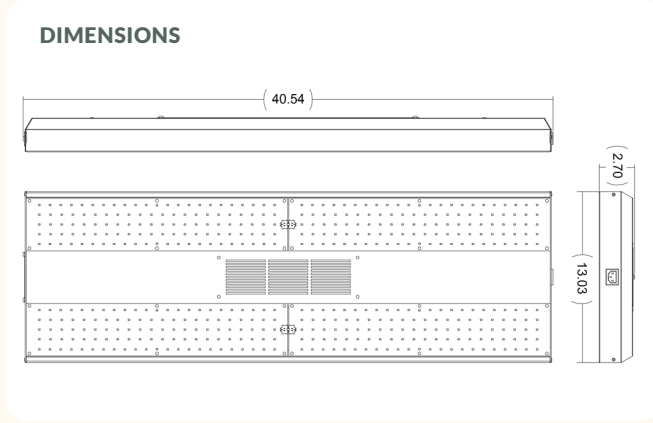




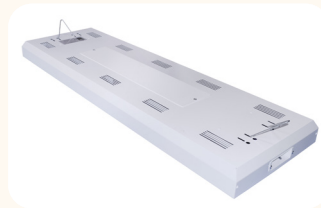
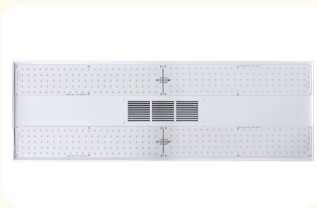
VEG-185

200W Grow Light - Veg

✂ Craft to commercial, we grow better plants.



STANDARD



FEATURES

- Industry leading performance.
- Standard 1X4 footprint.
- Patented spectrum.
- Natural white light.
- Suitable for CEA use with all crops.
- Controls compatible, 0%-100%.
- Ideally suited for veg applications.
- Architectural white powder coated aluminum housing.
- Made in the USA.
- Easy installation and operation.
- Ships with a 10' cord, NEMA 6-15P plug, and 5-15P adapter.

WARRANTY & LISTINGS

- cULus listed for horticultural damp locations not exceeding a maximum ambient temperature of 40°C.
- DLC horticultural approved.
- 5-year warranty of all electronics and housing.

ORDERING INFORMATION

Example: CTV-185-U-ST-10U

SERIES	WATTAGE	SPECTRUM		VOLTAGE		POWER SUPPLY	
CTV	185	U	Universal	ST	120-277V	10U	10' Cord & Plug
				HV	180-528V		



SPECIFICATIONS

Light Source	LED
Spectra	Patented
Efficacy	2.5 $\mu\text{mol}/\text{J}$
PPF	422 μmol
Input Power	200W MAX (180 TYP)
Input Voltage / Current	120 @1.42A 240 @0.71A 277 @0.62A
L/W/H Weight	40.5 / 13 / 3 9lbs
Mounting Height	>12 Inches
Operating Temperature	-40°C - 40°C (-40°F - 104°F)
Thermal Management	Passive convection
Dimming	0-10V / PWM / MANUAL PRESET
Lifetime per TM21 Q70 / Q90	72K hrs /45K hrs

Spectral Power Distribution

