

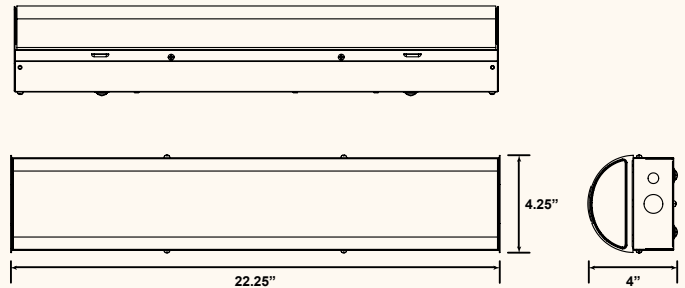
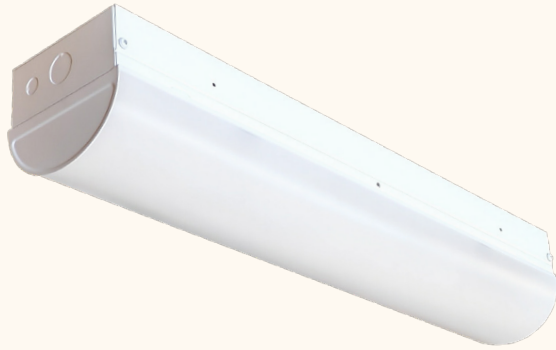


CT-SW-2FT

STAIRWELL LUMINAIRE

LUMEN & KELVIN SELECTABLE

PROJECT	TYPE	CATALOG#



OPTICAL

- PMMA (polymethyl methacrylate) forsted lens.
- Field selectable 3500k(warm white), 4000k (neutral white) and 5000k (cool white) color temperatures*.
- Tri-lumen selectable delivers 2,100 to 3,300 nominal lumens (see lumen tables on page 2)**.
- Long-life LEDs provide 190,000 hours of operation with at least 70% of initial lumen output (L70), and 58,000 hours with at least 90% of initial lumen output (L90)***.
- Optional occupancy dimming Sensor (factory installed).
- Remote control required for programming (see default settings on Page 2).
- LED color maintenance < 0.002 chromaticity shift ($\Delta u'v'$) over the initial 6,000 hours of operation.
- Color rendering index > 80%.

HOUSING

- Premium powder-coat, steel, white housing.

ELECTRICAL

- Operating temperature (ambient): -25°C to 50°C (-13°F to 122°F).
- Universal 120-277V AC voltage (50-60Hz) is standard.
- 0-10VDC dimming drivers are standard.
- Emergency driver option available.
- Input transient surge protection = 1kV.
- Power factor > 0.90.
- Total Harmonic distortion < 20%.

MOUNTING

- Surface mount kit.

CODE COMPLIANCE

- cULus listed for damp locations.
- DLC premium listed.
- Complies with FCC part 15, class A.
- Complies with UL924 when Emergency driver is installed.

WARRANTY

- 5 year warranty on all electronics and housing.

ORDERING INFORMATION

Example: CT-SW-2FT-332721L-3CCT

SERIES	NOMINAL LUMEN OUTPUT (SELECTABLE)		KELVIN SELECTABLE	EMERGENCY DRIVER	SENSOR
CT-SW-2FT	332721L	3,300 / 2,700 / 2,100	3CCT 35K / 4K / 5K	EM5 5W Emergency Driver EM10 10W Emergency Driver Blank No Emergency Driver	ODS Microwave Sensor Blank No Sensor



CT-SW-2FT

STAIRWELL LUMINAIRE

LUMEN & KELVIN SELECTABLE

ACCESSORIES (ORDER SEPARATELY)

Sensor:

- US002 = Default sensor settings: detection area = 100%, hold time = 5 sec, daylight threshold = disabled, stand-by period = 0 sec, stand-by dimming level = 10%
- HD05R = Remote control required for programming (sold separately)

Remote Mount EM Drivers:

- BLEM-CP-5C = 5W Emergency Driver W/Conduit
- BLEM-CP-10C = 10W Emergency Driver W/Conduit
- BLEM-CP-13C = 13W Emergency Driver W/Conduit

ELECTRICAL DATA

Series	Measurements	LOW LUMENS			MID LUMENS			HIGH LUMENS		
		3500k	4000k	5000k	3500k	4000k	5000k	3500k	4000k	5000k
CT-SW-2FT-332721L-3CCT	Lumens	2,048	2,132	2,124	2,728	2,880	2,789	3,249	3,462	3,324
	Watt	15.29	14.86	15.49	20.8	20.12	20.76	25.41	24.48	25.39
	Efficacy	134	143	137	131	143	134	128	141	131
	Input Current (A)	120V = 0.13 120V = 0.12 120V = 0.13	120V = 0.17 120V = 0.17 120V = 0.17	120V = 0.21 120V = 0.20 120V = 0.21						
240V = 0.06 240V = 0.06 240V = 0.06		240V = 0.09 240V = 0.08 240V = 0.09	240V = 0.11 240V = 0.10 240V = 0.11							
277V = 0.06 277V = 0.05 277V = 0.06		277V = 0.08 277V = 0.07 277V = 0.07	277V = 0.09 277V = 0.09 277V = 0.09							

PHOTOMETRICS

CT-SW-2FT-332721L-3CCT

Luminaire Data		Zonal Lumen Summary		
Description	2FT Stairwell Luminaire Lumen and Kelvin Select	Zone	Lumens	%Fixt
Total Lumens	3,324	0-20°	363	10.9%
Input Wattage	25	0-30°	767	23.1%
Efficacy (lm/W)	131	0-40°	1,251	37.6%
Spacing Criterion (0-180°)	1.3	20-50°	1,390	41.8%
Spacing Criterion (90-270°)	1.2	40-70°	1,346	40.5%
		0-60°	2,216	66.7%
		0-80°	2,877	86.5%
		0-90°	3,058	92.0%
		90-180°	266	8.0%
		0-180°	3,324	100.0%



CT-SW-2FT

STAIRWELL LUMINAIRE

LUMEN & KELVIN SELECTABLE

COMPATIBLE EMERGENCY DRIVERS-INSTALLED

Emergency Driver Part Number	EM5		EM10		
	MODEL	WATTS	EM LUMENS	WATTS	EM LUMENS
CT-SW-2FT-332721L-3CCT		5	640	10	1280
CT-SW-2FT-332721L-3CCT-ODS		5	640	10	1280

COMPATIBLE DIMMERS AND CONTROLS

Manufacturer	Model Number	Dimmer Range	Load Switching Capacity
Best Lighting	DWS-010V-T	10%-100%	600W
Best Lighting	DWS-010V-D	10%-100%	600W
Leviton	IP710-LFZ	10%-100%	1200W
Lutron	DVSTV	10%-100%	450W

PLUGS AND CORDS

Part number suffix	Description	For use with
6C3	6' cord - 3 conductor (black/white/green)	Standard
6C4	6' cord - 4 conductor (black/white/green/red)	EM driver
6C5	6' cord - 5 conductor (black/white/green/purple/pink)	Dimming
6C6	6' cord - 6 conductor (black/white/green/red/purple/pink)	Dimming & EM driver
10C3	10' cord - 3 conductor (black/white/green)	Standard
10C4	10' cord - 4 conductor (black/white/green/red)	EM driver
10C5	10' cord - 5 conductor (black/white/green/purple/pink)	Dimming
10C6	10' cord - 6 conductor (black/white/green/red/purple/pink)	Dimming & EM driver
15C3	15' cord - 3 conductor (black/white/green)	Standard
15C4	15' cord - 4 conductor (black/white/green/red)	EM driver
15C5	15' cord - 5 conductor (black/white/green/purple/pink)	Dimming
15C6	15' cord - 6 conductor (black/white/green/red/purple/pink)	Dimming & EM driver
6W3	6' whip - 3 conductor (black/white/green)	Standard
6W4	6' whip - 4 conductor (black/white/green/red)	EM driver
6W5	6' whip - 5 conductor (black/white/green/purple/pink)	Dimming
6W6	6' whip - 6 conductor (black/white/green/red/purple/pink)	Dimming & EM driver
6P515	6' cord - 3 conductor (black/white/green) - NEMA 5-15 plug (120V/15A)	Standard luminaire
6P615	6' cord - 3 conductor (black/white/green) - NEMA 6-15 plug (240V/15A)	Standard luminaire



CT-SW-2FT

STAIRWELL LUMINAIRE

LUMEN & KELVIN SELECTABLE

PLUGS AND CORDS

Part number suffix	Description	For use with
6P715	6' cord - 3 conductor (black/white/green) - NEMA 7-15 plug (277V/15A)	Standard luminaire
6P520	6' cord - 3 conductor (black/white/green) - NEMA 5-20 plug (120V/20A)	Standard luminaire
6P620	6' cord - 3 conductor (black/white/green) - NEMA 6-20 plug (277V/20A)	Standard luminaire
6P515L	6' cord - 3 conductor (black/white/green) - NEMA L5-15 plug (120V/15A locking)	Standard luminaire
6P615L	6' cord - 3 conductor (black/white/green) - NEMA L6-15 plug (240V/15A locking)	Standard luminaire
6P715L	6' cord - 3 conductor (black/white/green) - NEMA L7-15 plug (277V/15A locking)	Standard luminaire
6P520L	6' cord - 3 conductor (black/white/green) - NEMA L5-20 plug (120V/20A locking)	Standard luminaire
6P620L	6' cord - 3 conductor (black/white/green) - NEMA L6-20 plug (240V/20A locking)	Standard luminaire
6P720L	6' cord - 3 conductor (black/white/green) - NEMA L7-20 plug (277V/20A locking)	Standard luminaire
10P515	10' cord - 3 conductor (black/white/green) - NEMA 5-15 plug (120V/15A)	Standard luminaire
10P615	10' cord - 3 conductor (black/white/green) - NEMA 6-15 plug (240V/15A)	Standard luminaire
10P715	10' cord - 3 conductor (black/white/green) - NEMA 7-15 plug (277V/15A)	Standard luminaire
10P520	10' cord - 3 conductor (black/white/green) - NEMA 5-20 plug (120V/20A)	Standard luminaire
10P620	10' cord - 3 conductor (black/white/green) - NEMA 6-20 plug (277V/20A)	Standard luminaire
10P515L	10' cord - 3 conductor (black/white/green) - NEMA L5-15 plug (120V/15A locking)	Standard luminaire
10P615L	10' cord - 3 conductor (black/white/green) - NEMA L6-15 plug (240V/15A locking)	Standard luminaire
10P715L	10' cord - 3 conductor (black/white/green) - NEMA L7-15 plug (277V/15A locking)	Standard luminaire
10P520L	10' cord - 3 conductor (black/white/green) - NEMA L5-20 plug (120V/20A locking)	Standard luminaire
10P620L	10' cord - 3 conductor (black/white/green) - NEMA L6-20 plug (240V/20A locking)	Standard luminaire
10P720L	10' cord - 3 conductor (black/white/green) - NEMA L7-20 plug (277V/20A locking)	Standard luminaire
15P515	15' cord - 3 conductor (black/white/green) - NEMA 5-15 plug (120V/15A)	Standard luminaire
15P615	15' cord - 3 conductor (black/white/green) - NEMA 6-15 plug (240V/15A)	Standard luminaire
15P715	15' cord - 3 conductor (black/white/green) - NEMA 7-15 plug (277V/15A)	Standard luminaire
15P520	15' cord - 3 conductor (black/white/green) - NEMA 5-20 plug (120V/20A)	Standard luminaire
15P620	15' cord - 3 conductor (black/white/green) - NEMA 6-20 plug (277V/20A)	Standard luminaire
15P515L	15' cord - 3 conductor (black/white/green) - NEMA L5-15 plug (120V/15A locking)	Standard luminaire
15P615L	15' cord - 3 conductor (black/white/green) - NEMA L6-15 plug (240V/15A locking)	Standard luminaire
15P715L	15' cord - 3 conductor (black/white/green) - NEMA L7-15 plug (277V/15A locking)	Standard luminaire
15P520L	15' cord - 3 conductor (black/white/green) - NEMA L5-20 plug (120V/20A locking)	Standard luminaire
15P620L	15' cord - 3 conductor (black/white/green) - NEMA L6-20 plug (240V/20A locking)	Standard luminaire
15P720L	15' cord - 3 conductor (black/white/green) - NEMA L7-20 plug (277V/20A locking)	Standard luminaire